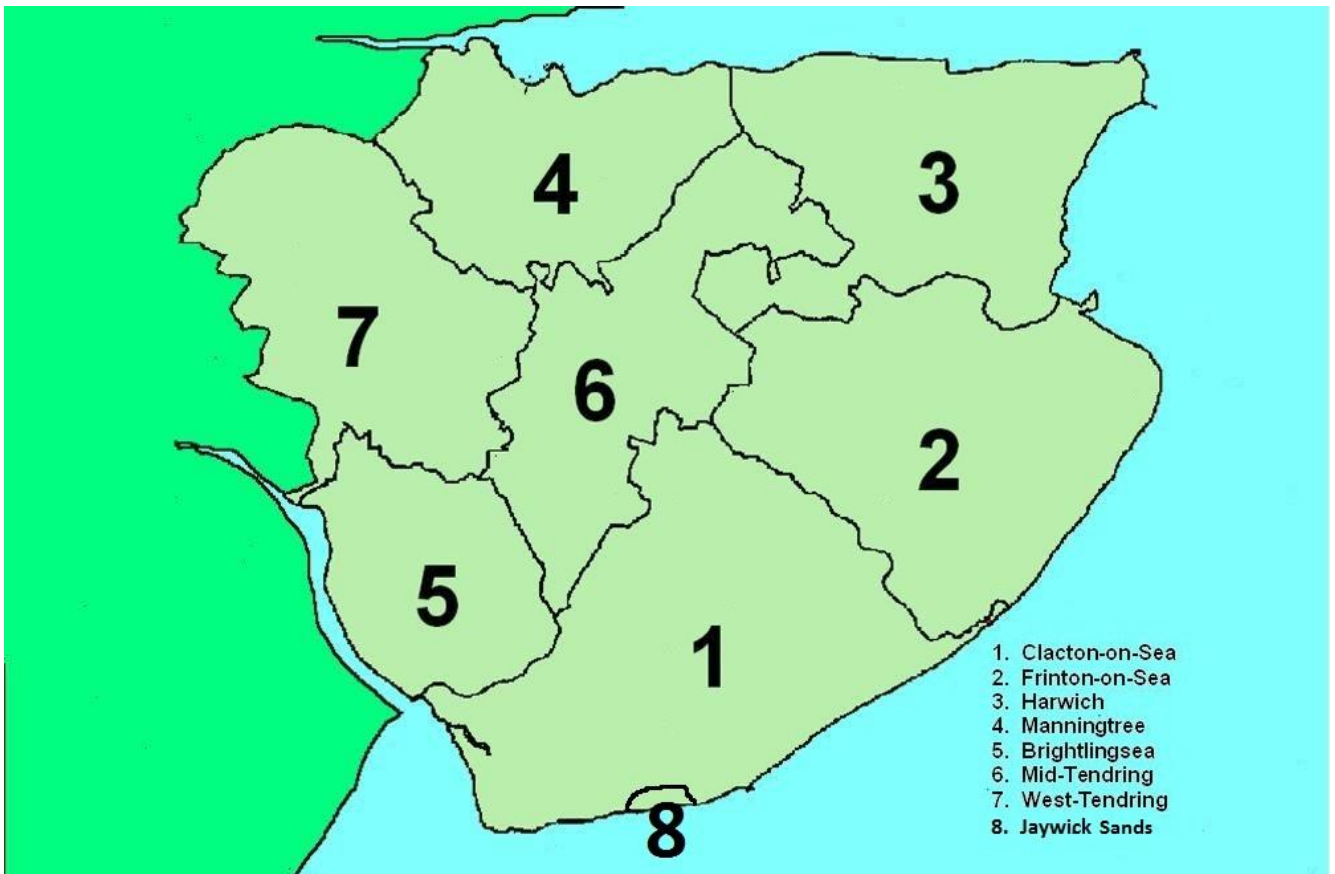


# Property Programme

A Three Year Programme to Be Reviewed Annually

First Edition: 2017 - 20



# **Clacton-on-Sea**

## **General Aims**

- Enhance the coast and tourist facilities.
- Rationalise public sector property
- Maximise high quality services
- Promote economic opportunities
- Facilitate home building



## **Short term projects**

- Rationalise TDC Office accommodation. Dispose of surplus sites.
- Achieve renewal of Holland Football Pavilion
- Achieve regeneration of the Atlanta Café
- Construct or remodel a viable premium café or similar at Holland on Sea
- Achieve upgrading and reuse of Martello E
- Manage coastal properties to provide a vibrant and attractive seafront.

## **Aspirational Projects**

- Achieve upgrading and reuse of Martello D
- Remodel Western part of Martello Coach Park for car parking
- Achieve new visitor attractions at Holland Haven
- Generate additional opportunities for visitor attractions on the coast
- Generate income for beach recharging

## **Longer Term Projects**

- Realise a Picker's ditch linear park
- Create a shared public service hub
- Establish a street market in the town centre

# Frinton and Walton



## General Aims

- Maximise the coast and tourist facilities.
- Reinvigorate Walton town centre
- Promote economic opportunities
- Facilitate home building

## Short term projects

- Dispose of Station Yard car park for redevelopment.
- Facilitate new healthcare facilities.

## Aspirational Projects

- Redevelop the Mill Lane Depot and public convenience site
- Improve the range and scope of recreational activities at Bathside.

## Longer Term Projects

- Seek opportunities for appropriate commercial uses on the seafront.
- Encourage appropriate regeneration of the Mere



Mill Lane Walton on the Naze – Long East Facing Elevation

# **Harwich**

## **General Aims**

- Enhance the coast and tourist facilities.
- Maximise heritage and conservation
- Reinvigorate the town centres
- Promote economic opportunities.
- Facilitate home building



## **Short term projects**

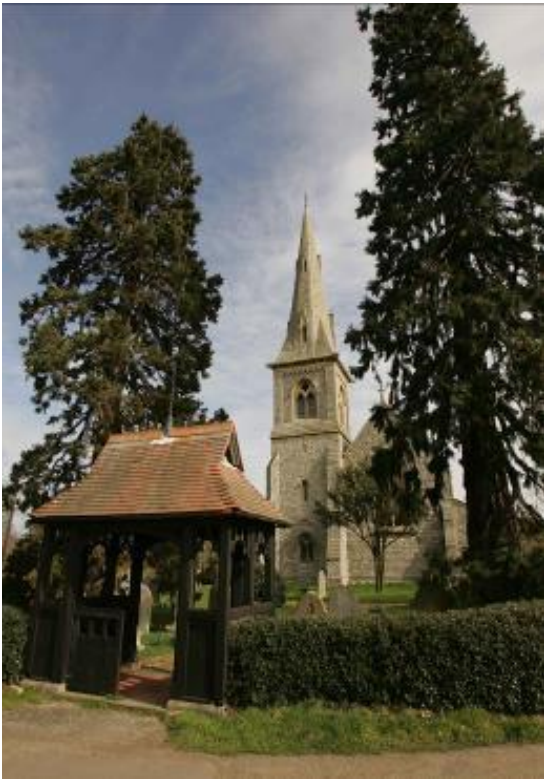
- Promote or facilitate new business and training ventures
- Dispose of the Former Isolation Hospital site for redevelopment

## **Aspirational Projects**

- Encourage regeneration of Key Town Centre sites such as Starlings Garage

## **Longer Term Projects**

- Realise linear parks South of Bathside and West of Parkeston.
- Renew aged facilities at Barrack Lane
- Facilitate use and activities at Beacon Hill Fort
- Work with relocation of Harwich and Parkeston Football Club
- Facilitate additional formal and informal open space at Low Road



## **Manningtree Mistley and Lawford**

### **General Aims**

- Promote economic opportunities
- Develop rural infrastructure
- Facilitate home building

### **Short term projects**

- Deliver financial and residential benefits from sustainable and sympathetic development

### **Aspirational Projects**

- Promote or facilitate new business and training ventures
- Seek active involvement in the Brownfield Riverside Avenue East site

### **Longer Term Projects**

- Promote and facilitate town centre regeneration in line with the Town Plan



# **Brightlingsea**

## **General Aims**

- Promote economic opportunities
- Develop rural infrastructure
- Facilitate home building

## **Short term projects**

- Establish a local service hub in partnership with the Town Council and others.
- Promote or facilitate new business and training ventures

## **Aspirational Projects**

- Enhance the environment in the Promenade Way area.

## **Longer Term Projects**

- Promote the linking of Brightlingsea to Wivenhoe and Colchester with a cycle route including a new bridge at Alresford Creek



# **Rural Tending**

## **General Aims**

- Promote economic opportunities
- Develop Rural infrastructure
- Facilitate home building

## **Short term projects**

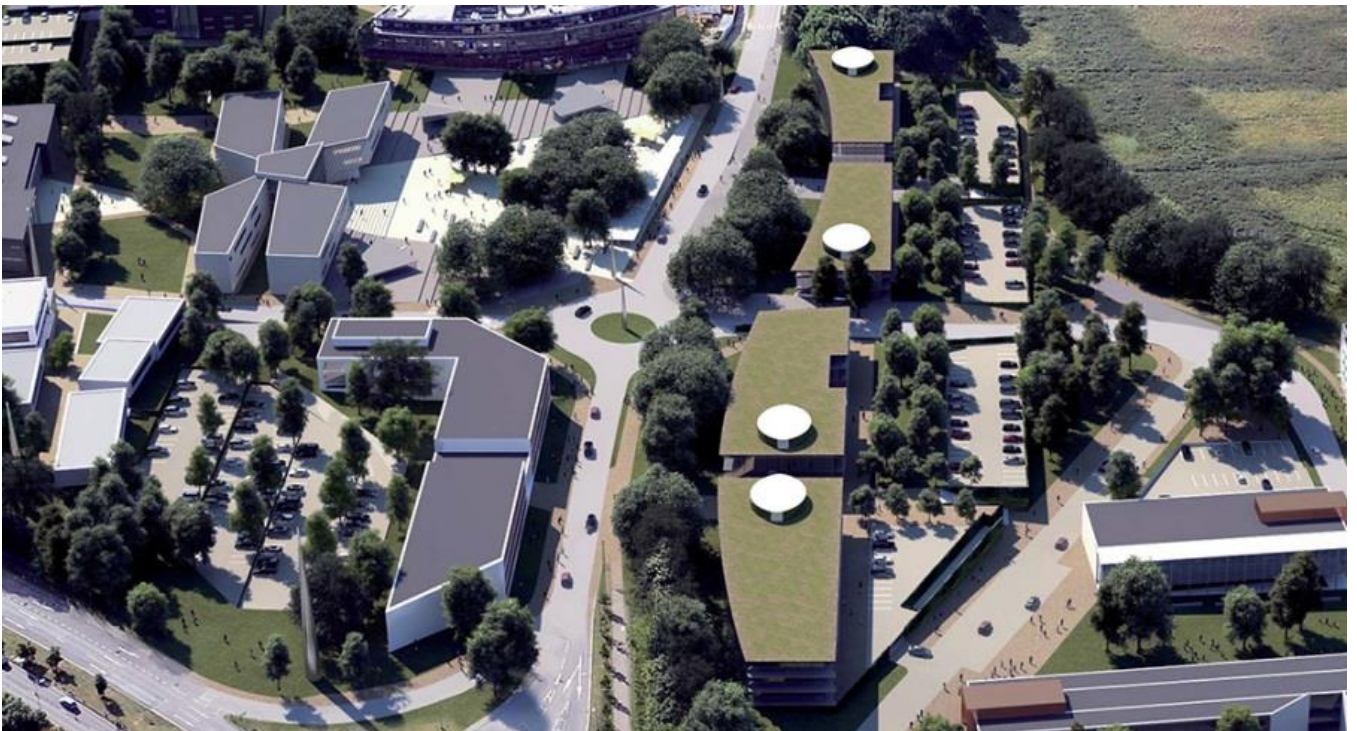
- Establish a Local Development Vehicle

## **Aspirational Projects**

- Work with Essex County Council and Colchester Borough Council to bring about a new Garden Village
- Deliver full broadband coverage where possible

## **Longer Term Projects**

- Deliver a new Garden Community



# Jaywick

## General Aims

- Promote economic opportunities
- Develop infrastructure
- Facilitate quality home building
- Consolidate partnership working with Essex County Council.

## Short term projects

- Carry out local improvements to TDC properties
- Acquire complementary areas.

## Aspirational Projects

- Resolve lease terms for the Community Resource Centre
- Establish an approach to site assembly

## Longer Term Projects

- Develop replacement dwellings, infrastructure community facilities and employment opportunities.

